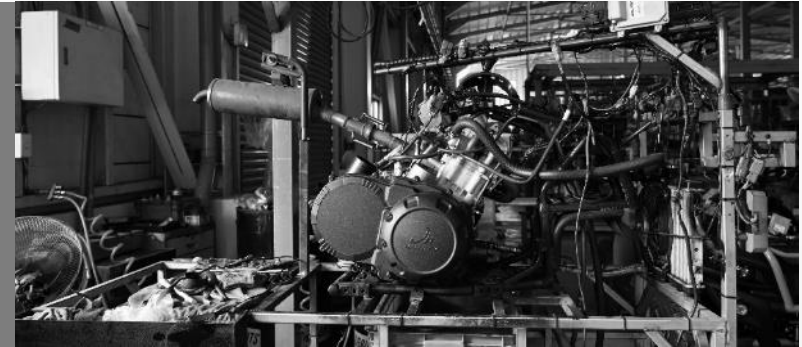


FACTORY



At the heart of the ATV factory, advanced dynamometers transformed testing procedures. Each ATV underwent rigorous assessment using these devices to ensure compliance with stringent performance standards. Dynamometers facilitated precise measurements, enabling technicians to evaluate crucial factors such as power output and torque with accuracy.

Concurrently, specialized engine testing platforms were meticulously engineered to assess the power and efficiency of each ATV. Technicians utilized these platforms to conduct comprehensive tests, guaranteeing that every vehicle delivered optimal performance and reliability across diverse terrains.



Behind the scenes, a dedicated team of technicians in the research and development department embarked on a mission to push the boundaries of ATV technology. Empowered by state-of-the-art tools and driven by a passion for innovation, they relentlessly explored new avenues, aiming to enhance performance, safety, and rider experience with each breakthrough.





SP300/400

Xtreme Enduro

No matter where your off-road adventure takes you, the Xtreme Enduro series is your reliable partner. With its robust construction and dependable performance, it's ready to support your solo show on any terrain.

SPORT

>



3 0 0 c c

B L A C K



G R A Y



4 0 0 c c

B L A C K



G R A Y





Xtreme Enduro

SP300

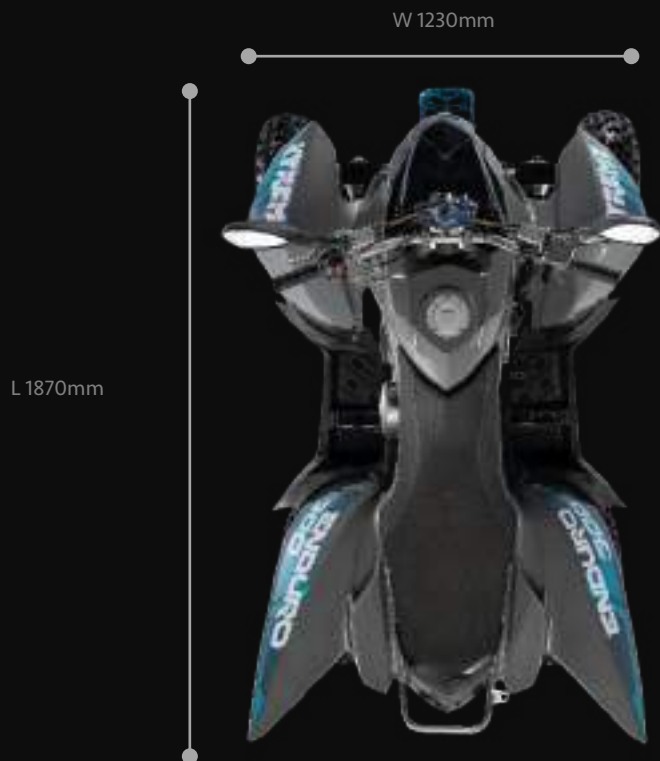
ENGINE ■

TYPE	LIQUID-COOLED, 4 STROKE, DOHC, 4 VALVES
CYLINDER ARRANGEMENT	SINGLE CYLINDER, VERTICAL
DISPLACEMENT	280.4 C.C.
BORE X STROKE (MM)	Ø74 X 65.2
FUEL DELIVERY	PD33J
COMPRESSION RATIO	11:1
IGNITION	C.D.I.
STARTING SYSTEM	ELECTRIC
TRANSMISSION	CVT WITH REVERSE, H/L GEAR
FINAL DRIVE	CHAIN/OIL-SEAL CHAIN 520
INTAKE SYSTEM	NA



**SUSPENSION / FRONT
BRAKE/FRONT
TIRE/FRONT**

DUAL A-ARM WITH 5 WAY PRELOAD-ADJUSTABLE SHOCKS
R/L DISC BRAKE
AT21X7-10



**SUSPENSION / REAR
BRAKE/ REAR
TIRE/ REAR**

SWING ARM WITH PRELOAD ADJUSTABLE SHOCK
DISC BRAKE
AT20 X 11-9

DIMENSIONS



WEIGHT	313 KG
FUEL CAPACITY	14.8 L
OIL CAPACITY	TOTAL AMOUNT: 1.6L
BATTERY	GTX12-BS
LUBRICATION SYSTEM	WET SUMP, OIL PUMP
IDLE SPEED	1500±100 RPM

